



Husky

Model 014647

Recommended Installation, Maintenance
and Inspection Instructions

RECONNECT
E25/E85 MagBreak®

E25/E85 MagBreak® Reconnectable Safe-T-Break®

IMPORTANT SAFETY INSTRUCTIONS - SAVE THESE INSTRUCTIONS IN AN EASILY ACCESSIBLE LOCATION.



WARNING: Cancer and Reproductive Harm - www.P65Warnings.ca.gov

WARNING This device separates at less than 225 lbf / 1000.9 N pull force!

INSTALLATION INSTRUCTIONS

NOTE: Prior to installation, it shall be determined that such pull force will not damage the hose assembly or dispensing device. The dispensing device must be securely bolted to dispensing island.

1. Attach scale to where the Safe-T-Break® will be installed. Apply 225 lbf / 1000.9 N pull force at various angles and check dispenser and hose for damage. If no damage occurred, release pull and complete installation.
2. Install Safe-T-Break® in the direction of the flow arrows, in high hose dispenser locations only and between the hose sections. The inlet whip hose should be 9 inches long.
3. Apply Loctite® 567 or other approved ethanol compatible sealant thinly to male threads of hose.
Do not use Teflon® tape. For BSP threads do not use thread sealant. Ensure supplied O-Ring is installed.
4. Tighten approximately 1 to 2 turns past hand tight - do not overtighten.
5. Pressurize system and visually inspect for leaks.
6. Only connect to E85 compatible fittings

**DO NOT OVERTIGHTEN. DO NOT WRENCH ACROSS COUPLING.
DO NOT INSTALL DIRECTLY TO THE DISPENSER.**

RECONNECT INSTRUCTIONS

- Shut off dispenser and relieve line pressure.
- Before Reconnecting:
 - Inspect the entire dispensing system and Safe-T-Break® for damage.
 - Conduct pull test for dispenser integrity (see Step 1 of Installation Instructions above).
 - Lubricate o-rings with light oil.
- Reconnecting:
 - Push male half into female half and twist ends until unit snaps together and locks. Confirm the two halves are locked and will not rotate by rotating the two hex ends in opposite directions by hand.
 - Replace Safe-T-Break® if doesn't readily reconnect.
- After Reconnected:
 - Check reconnected Safe-T-Break® for proper engagement.
 - Check for electrical conductivity.
 - Check for leaks at Safe-T-Break®.
 - Check for proper flow of fuel.

ONLY PROPERLY TRAINED PERSONNEL SHOULD RECONNECT SAFE-T-BREAKS®.

TESTING / MAINTENANCE / INSPECTION



Daily

- Check for leaks / stains.
- Check for damage.



Monthly

- Check "remove by" date.



Annually

- Conduct pull test – disconnect, inspect interior for debris, discoloration, and foreign matter.
- Check for electrical continuity.

• All drive aways, maintenance and inspection activities must be logged using the serial number of the individual product.

• Apply city, state, or federal testing regulations as appropriate.

**ANY TEST / INSPECTION FAILURE REQUIRES
IMMEDIATE EQUIPMENT REPLACEMENT
OR REMOVAL FROM SERVICE.**

MADE IN THE USA



ALWAYS ADHERE TO INSTALLATION / USAGE INSTRUCTIONS AND WARNINGS.

Improper use may result in injury, damage, or hazardous spill.



GENERAL WARNINGS / INSTRUCTIONS PERTAINING TO A RISK OF FIRE, ELECTRIC SHOCK OR INJURY TO PERSONS:



• Use of equipment is at individuals' own risk.

• Always abide and adhere to city, state, and federal regulations regarding use and installation of dispensing equipment.



• Always follow the dispenser manufacturer's instructions.

• Always turn off all power to dispenser during maintenance and inspection activities.

• Always close the shear valves during maintenance and inspection activities.

• Always relieve pressure from system prior to performing maintenance activities.



• Always check continuity after installation using a megohmmeter (Refer to PEI RP 400 for details).

• Always replace or remove from service damaged or leaking dispensing equipment immediately.



• Always report leaks / spills / accidents to appropriate authorities.



• Always wear appropriate safety equipment during maintenance activities.



• Always have appropriate fire extinguishing equipment within 5 ft / 1.5 m of dispensers.

• Always use pipe sealant approved for gasoline service.



• Always place containers on the ground before filling.



• Always discharge static electricity before using or servicing equipment by touching a metal part of the dispenser before and after fueling vehicle.



• Never smoke within 20 ft / 6.1 m of dispensers.

• Never keep in service past recommended life.

• Never leave the nozzle unattended while dispensing fuel.



• Never use sparking or flaming devices within 20 ft / 6.1 m of dispensers.



• Never use power tools near dispensers or to aid in the installation process.



• Never use cell phone within 20 ft / 6.1 m of dispensers.



• Never reenter car when fueling vehicle.

• Never allow gasoline to touch eyes or skin.



• Never use at flow rates in excess of regulatory guidelines.



• Never use at flow rates less than 5 gpm / 18.9 Lpm.

• Never dispense flammable material into unapproved containers.

• Never dispense fuel without a valid driver's license.

Listings 

IMPORTANT SAFETY INSTRUCTIONS - SAVE THESE INSTRUCTIONS IN A READILY ACCESSIBLE LOCATION.

WARRANTY

VAPOR PRODUCTS – Husky Corporation will, at its option, repair, replace, or credit the purchase price of any Husky® manufactured product which proves upon examination by Husky, to be defective in material and/or workmanship for a period of one (1) year of installation or fifteen (15) months from the manufacture date of shipment by Husky, whichever occurs first. The warranty period on repaired or replacement vapor recovery products is only for the remainder of the warranty period of the defective product.

CONVENTIONAL PRODUCTS – Husky Corporation will, at its option, repair, replace, or credit the purchase price of any Husky manufactured product which proves upon examination by Husky, to be defective in material and/or workmanship for a period of one (1) year from the manufacture date of shipment by Husky.

Buyer must return the products to Husky, transportation charges prepaid. This Warranty excludes the replaceable bellows, bellows spring assembly, spout assembly and scuff guard, unless (i) damage is obvious when the product is removed from shipping carton and (ii) the defective product is returned to Husky prior to use. This Warranty does not apply to equipment or parts which have been installed improperly, damaged by misuse, improper operation or maintenance, or which are altered or repaired in any way.

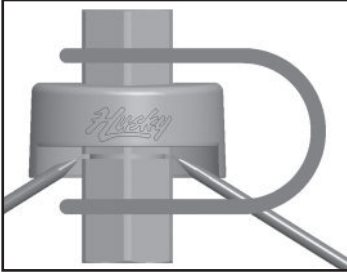
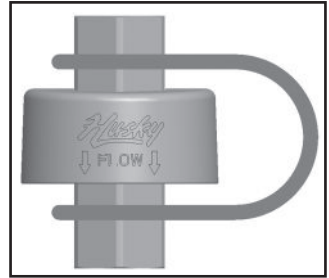
The Warranty provisions contained herein apply only to original purchasers who use the equipment for commercial or industrial purposes. There are no other warranties of merchantability, fitness for a particular purpose, or otherwise, and any other such warranties are hereby specifically disclaimed.

Husky assumes no liability for labor charges or other costs incurred by Buyer incidental to the service, adjustment, repair, return, removal or replacement of products. Husky assumes no liability for any incidental, consequential, or other damages under any warranty, express or implied, and all such liability is hereby expressly excluded.

Husky reserves the right to change or improve the design of any Husky fuel dispensing equipment without assuming any obligations to modify any fuel dispensing equipment previously manufactured.

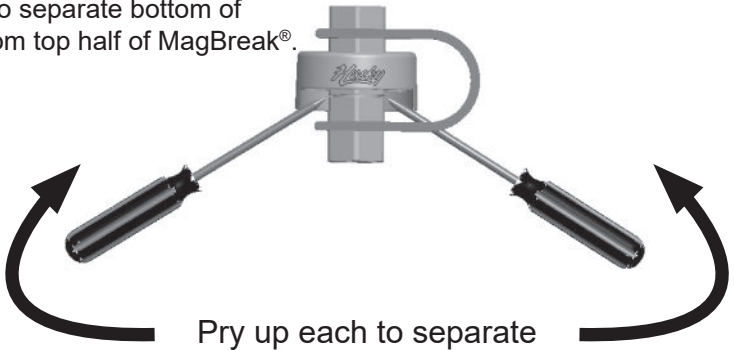
MANUAL DISCONNECT OF MAGBREAK®

1. Turn off dispenser.
2. Tie each end of a piece of rope to each end of the MagBreak® as shown.

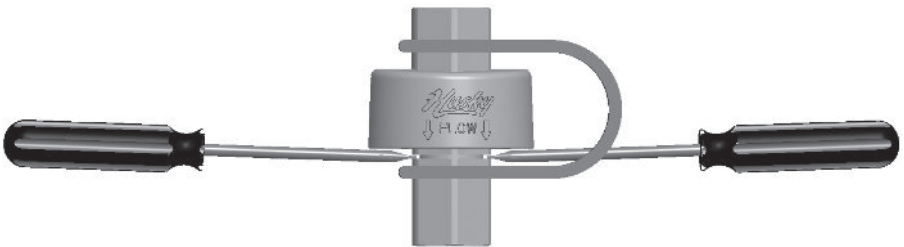


3. Position two wide flat screwdrivers under top cup and into groove of bottom of MagBreak® as shown.

4. Simultaneously, pry up on both screwdrivers to separate bottom of MagBreak® from top half of MagBreak®.

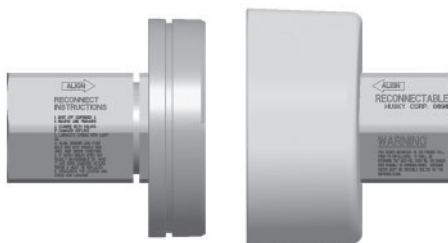
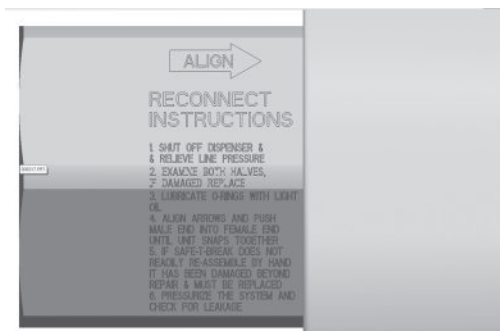


5. Stop prying when screwdrivers are at or above horizontal.



6. Remove screwdrivers and pull down on lower half of MagBreak® to fully separate. Drain fuel in lower half into Husky Safe-T-Break Fuel Cup and remove tether rope. MagBreak® is separated.

7. To reconnect MagBreak®, follow the Reconnect instructions on MagBreak®, or the same instructions below.



RECONNECT INSTRUCTIONS

1. Shut off dispenser and relieve line pressure.
2. Examine both halves, if damaged, replace.
3. Lubricate o-rings with light oil.
4. Push male half into female half and twist ends until unit snaps together and locks. Confirm the two halves are locked and will not rotate by rotating the two hex ends in opposite directions by hand.
5. If Safe-T-Break® does not readily re-assemble by hand, it has been damaged beyond repair and must be replaced.
6. Pressurize the system and check for leakage.