



Husky

012649, 012885, *013287A, 013530 & *013530A
Recommended Installation, Maintenance
and Inspection Instructions

**SWIVEL STB
COMBO**

Swivel • Safe-T-Break® Combo

IMPORTANT SAFETY INSTRUCTIONS - SAVE THESE INSTRUCTIONS IN A READILY ACCESSIBLE LOCATION.



WARNING: Cancer and Reproductive Harm - www.P65Warnings.ca.gov



WARNING: This device separates between 180-337 lbs force (800-1500N).
This device is designed for use at motor fuel dispensing facilities only.

INSTALLATION INSTRUCTIONS

NOTE: Prior to installation, it shall be determined that such pull force will not damage the hose assembly or dispensing device. The dispensing device must be securely bolted to the dispensing island.

1. Turn off dispenser and relieve line pressure.
2. Attach scale to where the Swivel • Safe-T-Break® Combo will be installed. Apply 337 lbf / 1,500 N pull force at various angles and check dispenser and hose for damage. If no damage occurred, release pull and complete installation.
3. Install in the direction of the flow arrows on Safe-T-Break®.
4. Do not use pipe thread sealant of any kind on the threads of the hose section.



5. Tighten firmly approximately 15-20 lbf-ft / 20.3 - 27 N•m but do not overtighten.
6. Install the Swivel • Safe-T-Break® Combo.
7. Push guard back over Safe-T-Break® until it rests in the groove.

**VERIFY SMOOTH ROTATION OF SWIVEL JOINT AFTER INSTALLATION.
DO NOT OVERTIGHTEN. DO NOT WRENCH ACROSS COUPLING.
DO NOT INSTALL DIRECTLY TO THE DISPENSER.**

TESTING / MAINTENANCE / INSPECTION



Daily

- Check for leaks / stains.
- Check for damage.
- Check for smooth rotation of swivel.



Monthly

- Measure gap at swivel joint - a credit card should not fit in the gap (0.03 in / 0.76 mm).
- Check "remove after" date.



Annually

- Check for electrical conductivity.
- Conduct pull test - disconnect Safe-T-Break®, inspect interior for debris, discoloration, and foreign matter.

• All drive aways, maintenance and inspection activities must be logged using the serial number of the individual product.

• Apply city, state, or federal testing regulations as appropriate.

ANY TEST / INSPECTION FAILURE REQUIRES IMMEDIATE EQUIPMENT REPLACEMENT OR REMOVAL FROM SERVICE..

MADE IN THE USA

IF SEPARATION OCCURS

Note: Reconnection of this Safe-T-Break® must only be done by an authorized service technician. The dispenser, nozzle and hose connections should also be checked for possible damage. Technician should then subject the whole system to a pressure test before returning it to normal operation.

Before Reconnection:

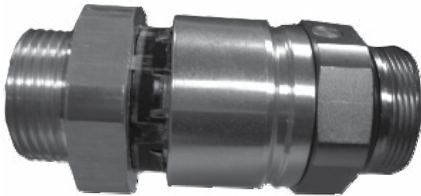
1. Turn off dispenser and relieve line pressure.
2. Push Safe-T-Break® guard back over end of hose, leaving hose end exposed.
3. Unscrew Body of Safe-T-Break® from nozzle and Insert from hose. Drain hose.
4. Clean all parts and check for damage, such as out-of-round condition, deformation, or broken plastic parts. Do not reuse Safe-T-Break® if such damage has occurred.

5. Ensure the circlip inside the Body of the Safe-T-Break® still moves freely within the groove. Do not reuse Safe-T-Break® if circlip is stuck, warped or does not move freely.



6. Lubricate the sloped sliding surface of the Insert, the circlip groove, and the o-ring.

7. Center circlip within Body. Hold Body and Insert by hand, center, and press together by hand. Force must be applied in a straight line.



8. Place Safe-T-Break® into a vise. Listen for a click just before the gap between the Insert and Body closes. In case of significant resistance, pull apart and return to step 7.

After Reconnection:

1. Screw Safe-T-Break® back into hose and nozzle.
2. Check Safe-T-Break® for proper engagement.
3. Check for electrical conductivity.
4. Check for leaks at Safe-T-Break®
5. Check for meter creep leakage per [California Department of Food and Agriculture Device Enforcement Manual](#), EPO #26-A-4 thru #26-A-5 Section 1.
6. Check for proper flow of fuel.
7. Refer to city, state and federal requirements for vapor integrity testing requirements.

ONLY PROPERLY TRAINED PERSONNEL SHOULD RECONNECT SAFE-T-BREAKS®.

ALWAYS ADHERE TO INSTALLATION / USAGE INSTRUCTIONS AND WARNINGS.

Improper use may result in injury, damage, or hazardous spill.



GENERAL WARNINGS / INSTRUCTIONS PERTAINING TO A RISK OF FIRE, ELECTRIC

SHOCK OR INJURY TO PERSONS:



- Use of equipment is at individuals' own risk.
- Always abide and adhere to city, state, and federal regulations regarding use and installation of dispensing equipment.



- Always follow the product manufacturer's installation and maintenance instructions.
- Always turn off all power to dispenser during maintenance and inspection activities.
- Always close the shear valves during maintenance and inspection activities.



- Always relieve pressure from system prior to performing maintenance activities.
- Always check continuity after installation using a megohmmeter (Refer to PEI RP 400 for details).
- Always replace or remove from service damaged or leaking dispensing equipment immediately.



- Always report leaks / spills / accidents to appropriate authorities.



- Always wear appropriate safety equipment during maintenance activities.



- Always have appropriate fire extinguishing equipment within 5 ft / 1.5 m of dispensers.
- Never use pipe sealant (Teflon® tape, anti-seize or any other kind of sealant).



- Always place containers on the ground before filling.



- Always discharge static electricity before using or servicing equipment by touching a metal part of the dispenser before and after fueling vehicle.



- Never smoke within 20 ft / 6.1 m of dispensers.
- Never keep in service past recommended life.
- Never leave the nozzle unattended while dispensing fuel.



- Never use sparking or flaming devices within 20 ft / 6.1 m of dispensers.



- Never use power tools near dispensers or to aid in the installation process.



- Never use cell phone within 20 ft / 6.1 m of dispensers.



- Never reenter car when fueling vehicle.
- Never allow gasoline to touch eyes or skin.



- Never use at flow rates in excess of regulatory guidelines.

- Never use at flow rates less than 5 gpm / 18.9 Lpm.

- Never dispense flammable material into unapproved containers.

- Never dispense fuel without a valid driver's license.

Listings



* SIRA 17ATEX9218U
EN13617-2 (TYPE 1)
EN13617-4 (STYLE 1)

"ONLY FOR USE WITH FUEL IN GAS GROUP II A"

IMPORTANT SAFETY INSTRUCTIONS - SAVE THESE INSTRUCTIONS IN A READILY ACCESSIBLE LOCATION.

WARRANTY

VAPOR PRODUCTS — Husky Corporation will, at its option, repair, replace, or credit the purchase price of any Husky® manufactured product which proves upon examination by Husky®, to be defective in material and/or workmanship for a period of one (1) year of installation or fifteen (15) months from the manufacture date of shipment by Husky, whichever occurs first. The warranty period on repaired or replacement vapor recovery products is only for the remainder of the warranty period of the defective product.

CONVENTIONAL PRODUCTS — Husky Corporation will, at its option, repair, replace, or credit the purchase price of any Husky manufactured product which proves upon examination by Husky, to be defective in material and/or workmanship for a period of one (1) year from the manufacture date of shipment by Husky.

Buyer must return the products to Husky, transportation charges prepaid. This Warranty excludes the replaceable bellows, bellows spring assembly, spout assembly and scuff guard, unless (i) damage is obvious when the product is removed from shipping carton and (ii) the defective product is returned to Husky prior to use. This Warranty does not apply to equipment or parts which have been installed improperly, damaged by misuse, improper operation or maintenance, or which are altered or repaired in any way.

The Warranty provisions contained herein apply only to original purchasers who use the equipment for commercial or industrial purposes. There are no other warranties of merchantability, fitness for a particular purpose, or otherwise, and any other such warranties are hereby specifically disclaimed.

Husky assumes no liability for labor charges or other costs incurred by Buyer incidental to the service, adjustment, repair, return, removal or replacement of products. Husky assumes no liability for any incidental, consequential, or other damages under any warranty, express or implied, and all such liability is hereby expressly excluded.

Husky reserves the right to change or improve the design of any Husky fuel dispensing equipment without assuming any obligations to modify any fuel dispensing equipment previously manufactured.